



Port of Barrow Island Marine Notice 03/2025

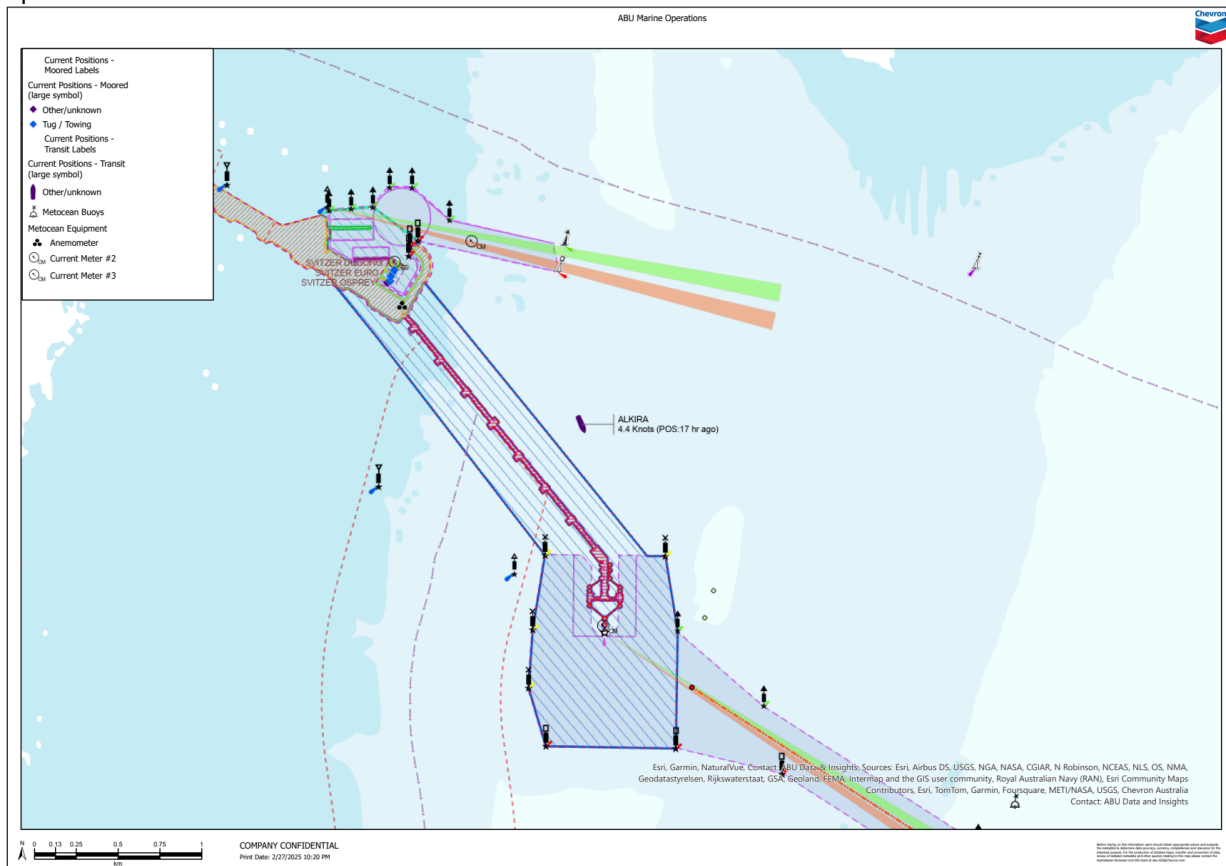
Port of Barrow Island Diving Operations

28th February 2025

Survey dive operations will be taking place within the Port of Barrow Island marine terminal Jetty and Material Offloading Facility (MOF) over the entire month of March 2025.

The vessel Alkira will be operating based on available opportunity at any location along the jetty or MOF areas. Please ensure to keep a lookout and maintain a listening watch on VHF Channel 10 while transiting the Port of Barrow Island.

International Code signals shall be displayed when diving operations are in progress, a 100 meters exclusion distance from the dive vessel shall be observed by all vessels not involved in the operation.



Port users and operators are reminded to update their records and ensure information is efficiently communicated.

A complete listing of Port of Barrow Marine Notices in force can be viewed and downloaded from the Port of Barrow website (allow for Perth business hours to process) at:

<https://australia.chevron.com/our-businesses/barrow-island/barrow-island-port>

Gorgon Marine Superintendent
Barrow Island
Tel: 08 9184 3668
Email: bwiportsupt@chevron.com



Port of Barrow Marine Notice 02/2025

Declared Depths for Material Offloading Facility (MOF), Heavy Lift Facility Berth and Gorgon Marine Terminal

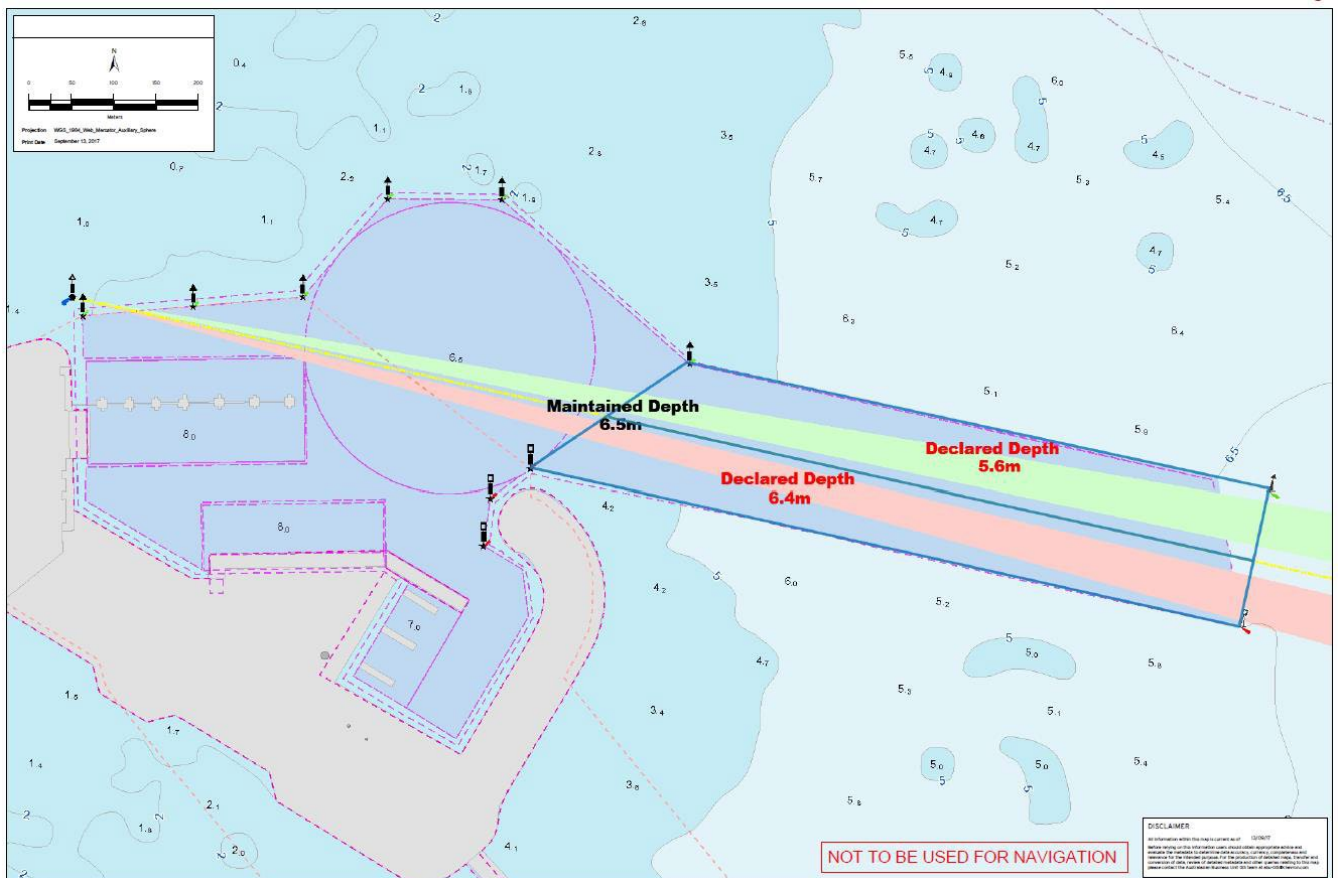
09 February 2025

A hydrographic survey of the Material Offloading Facility (MOF) and Gorgon Marine Terminal (GMT) dredged areas was carried out in November 2024. Based on this survey, and previous surveys, the following declared depths are applicable to the dredged areas within the Port.

Mariners are to ensure that declared depths and tidal heights are considered when operating within the Port and that sufficient under keel clearance (UKC) remains in place at all times.

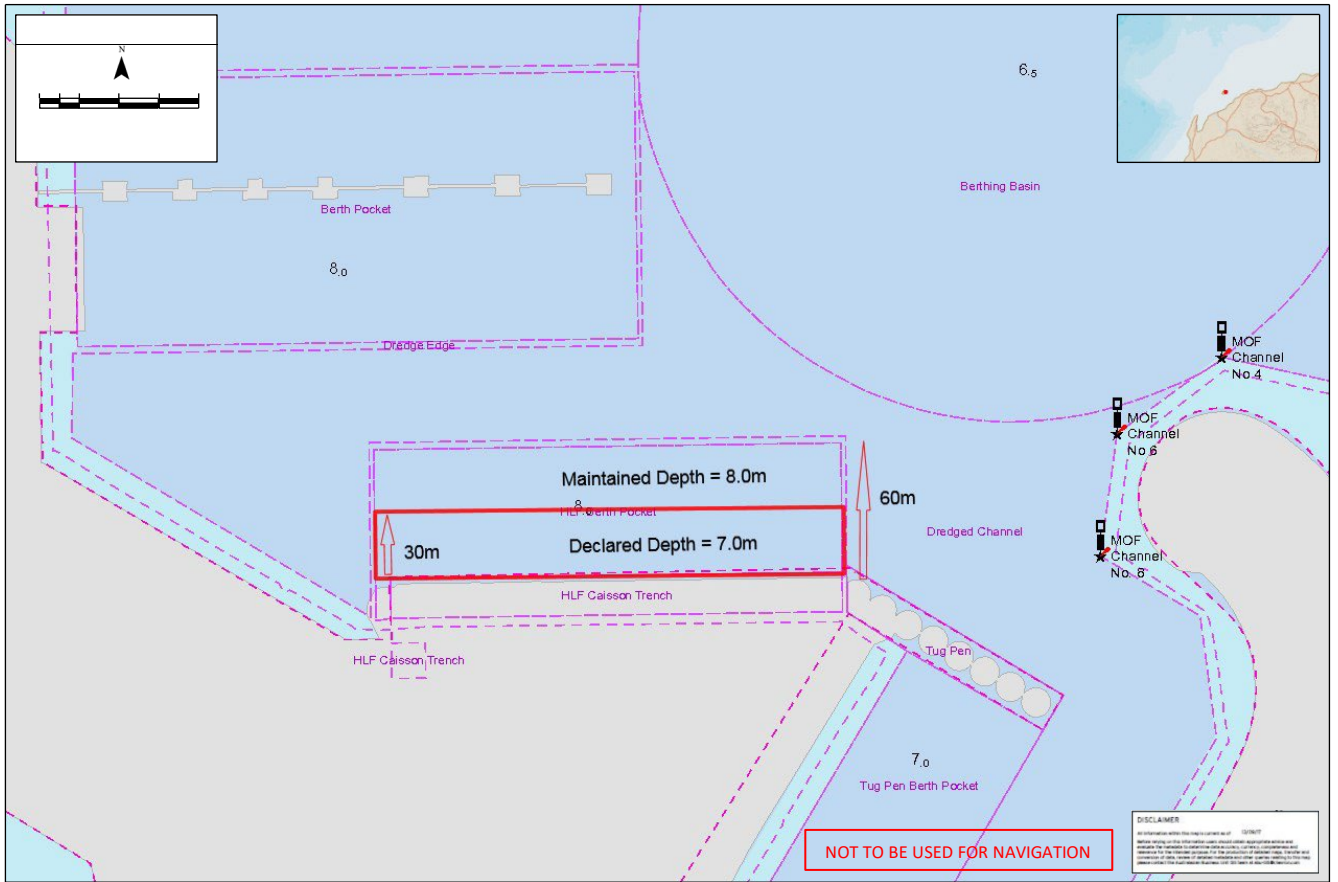
Material Offloading Facility

The declared depth of the Material Offloading Facility (MOF) Channel to the north of the centerline of the Leading Marks is **5.6 metres** below chart datum while the declared depth for the MOF Channel to the south of the centerline of the Leading Marks is **6.4 metres** below chart datum (enclosed within the blue lines below). All other areas within the Port of Barrow Island MOF are as per charted dredged depths shown below.



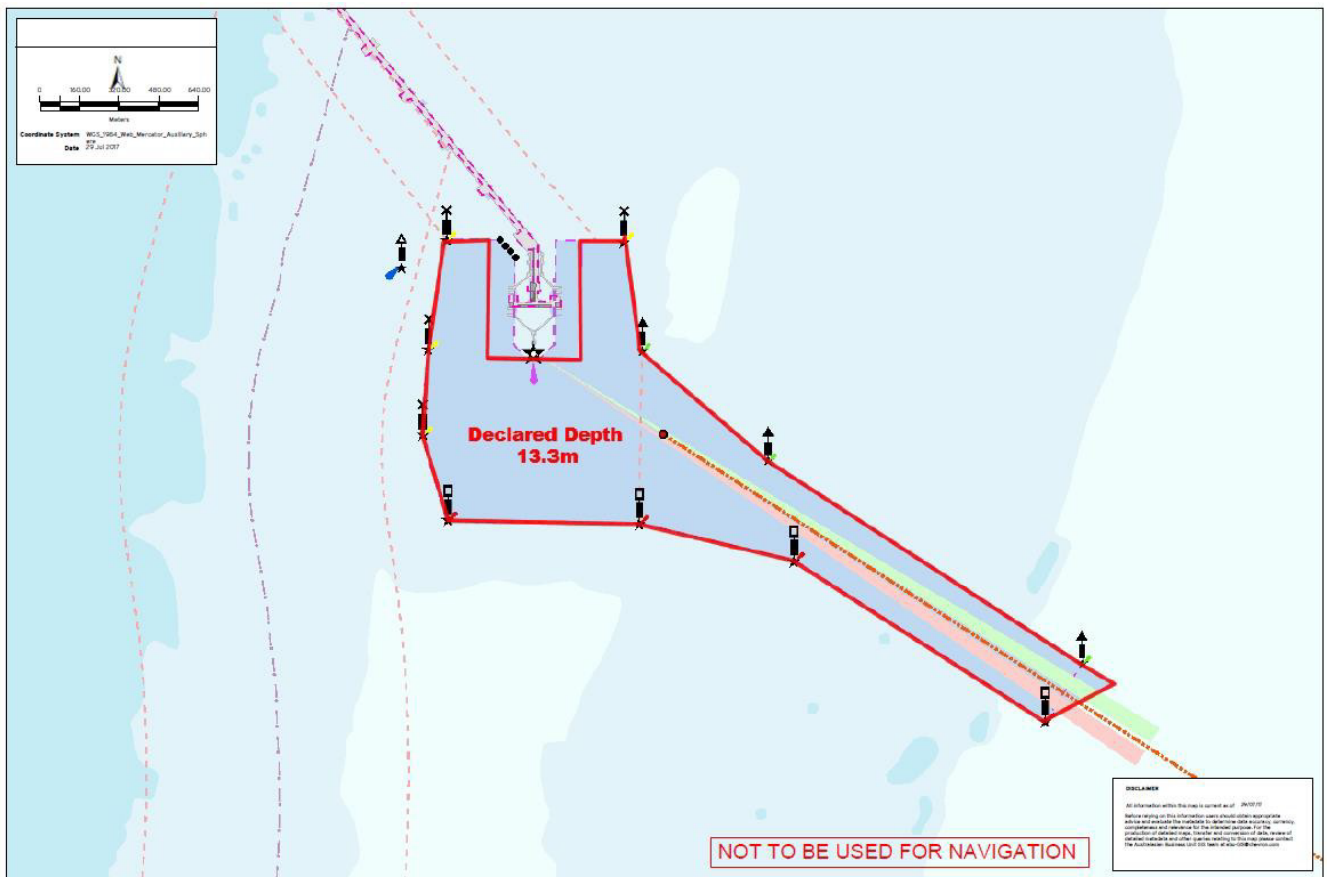
MOF Heavy Lift Facility Berth

The declared depth of the Heavy Lift Facility (HLF) berth pocket is **7.0 metres** below chart datum (enclosed within the bold red lines below) over the southern half, extending to **30 metres** from the face of the fenders.



Gorgon Marine Terminal (GMT) Shipping Channel & Turning Basin

The declared depth of the Gorgon Marine Terminal (GMT) channel and turning basin is **13.3 metres** below chart datum (enclosed within the bold red lines below), while the East and West berthing pockets is 15 meters below chart datum.



Port users and operators are reminded to update their records and ensure information is efficiently promulgated.

A complete list of Port of Barrow Marine Notices in force can be viewed and downloaded from the Port of Barrow website at: <https://australia.chevron.com/what-we-do/barrow-island/barrow-island-port>

Hamish Murray/Cameron Crampton/Wayne Schwartz
Gorgon Marine Superintendent – Barrow Island
Tel: 08 9184 3668
Email: bwiportsupt@chevron.com



Port of Barrow Island - Marine Notice 07/2024

Port of Barrow Island: UPDATED Hours of Operation

12/11/2024

This Marine Notice supercedes Marine Notice 07/2020 Port of Barrow Hours of Operations.

Port users are advised that the Port of Barrow Island is no longer maintaining a manned radio watch for marine traffic. Monitoring of VHF 16/10 will only be maintained by the Port office as "on demand" coverage for terminal shipping operations as per below:

- For all arriving Gorgon Marine Terminal (GMT) and Conventional Buoy Mooring (CBM) vessels, at 1 hour prior to the Required Arrival Time (RAT) to confirm POB time and pass Pilot boarding instructions
- In the event of any Marine Emergency
- As required by Marine Superintendent for abnormal conditions & situations (eg weather, equipment failure)

The Barrow Island Security Operations Centre (SOC) will be monitoring VHF 10 on a 24/7 basis for emergency purposes only.

All VHF communications within the Port shall be made by the respective vessel via an 'All Ships' call on VHF Channel 10, as below.

Inbound Vessels	For GMT traffic <ul style="list-style-type: none"> - When crossing port limits - When passing LNG beacons 6 and 7 - First line and when all fast
	All other traffic <ul style="list-style-type: none"> - When crossing port limits (e.g. "All Ships, Toll Astrolabe, entering Port Limits & proceeding via the MOF channel to the HLF berth") - When entering the MOF Channel - When All Fast alongside
Outbound Vessels	For GMT traffic <ul style="list-style-type: none"> - Commence letting go - Last line - When passing LNG beacons 6 and 7 - When crossing port limits outbound
	All other traffic <ul style="list-style-type: none"> - Before departing berth (e.g. Svitzer Boodie, Departing the MOF tug pen for the GMT") - When crossing port limits outbound

All Vessels are to keep a lookout by all available means, including a listening watch on VHF Channel 10 & 16, and remain vigilant especially when navigating near the MOF and MOF Channel.

A complete listing of Port of Barrow Marine Notices in force can be viewed and downloaded from the Port of Barrow website (allow for Perth business hours to process) at:

<http://www.chevronaustralia.com/our-businesses/barrow-island/barrow-island-port>

Arno Tielens/Hamish Murray
Gorgon Marine Superintendent – Barrow Island
Tel: 08 9184 3668
Email: bwjportsupt@chevron.com

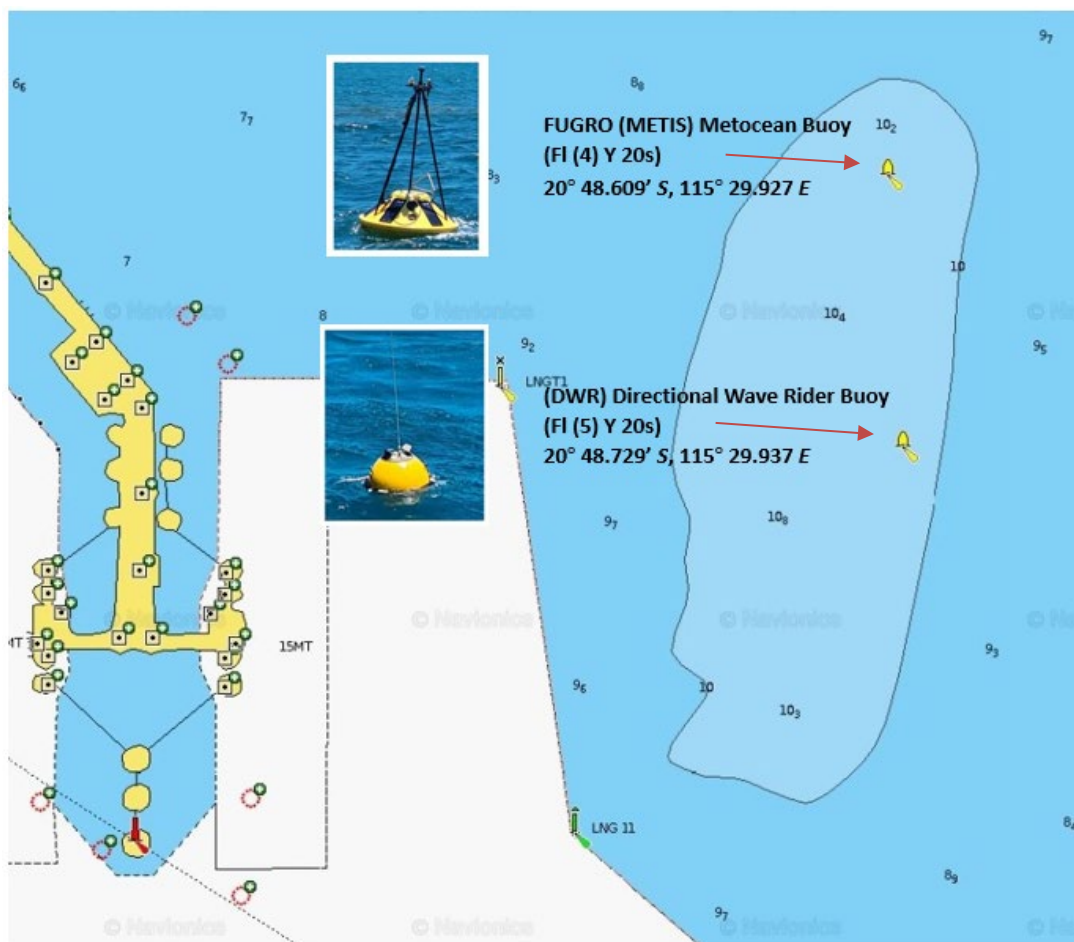
Port of Barrow Island Marine Notice 07/2023

Wave Rider Buoy Positions

18 Dec 2023

Mariners are advised that the Port of Barrow Island has two Wave Rider Buoys to the East of the Gorgon Marine Terminal, Mariners are advised to avoid this area unless engaged in maintenance activities.

Below coordinates indicate the two locations of the two deployed buoys.



A complete listing of Port of Barrow Island Marine Notices in force can be viewed and downloaded from the Port of Barrow Island website (allow for Perth business hours to process) at:

<http://www.chevronaustralia.com/our-businesses/barrow-island/barrow-island-port>

Hamish Murray/Cameron Crampton/Arno Tielens
Gorgon Marine Superintendent – Barrow Island
Tel: 08 9184 3668
Email: bwiport@chevron.com