



# Port of Barrow Island Marine Notice 01/ 2018

## Aids to Navigation (AtoN) Removal Campaign

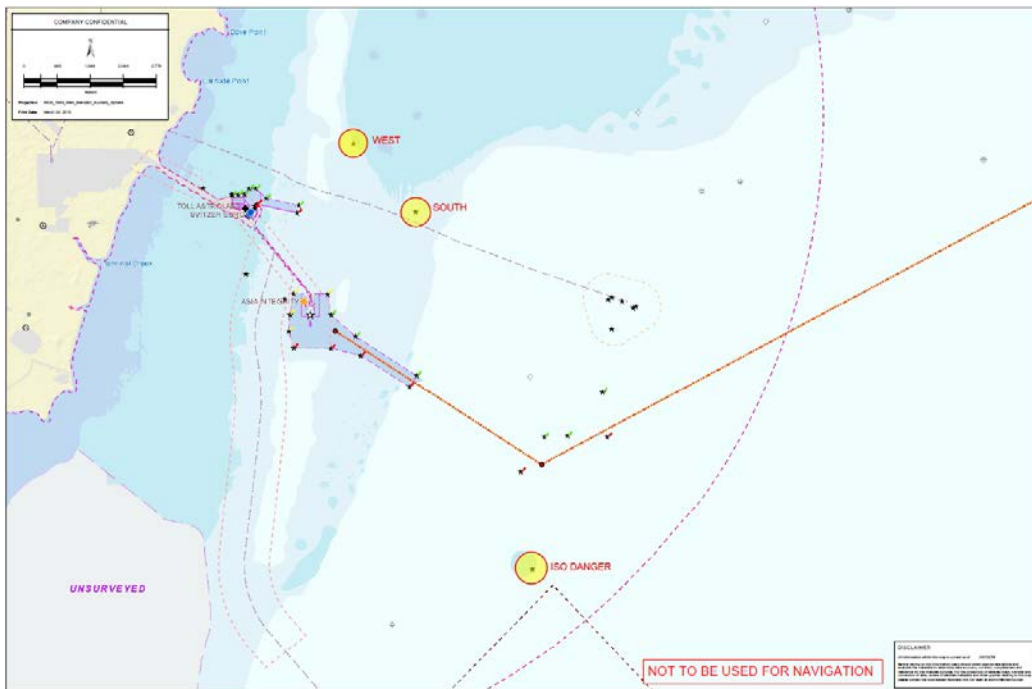
05 April 2018

Port users are to be advised that Aids to Navigation, *South Cardinal*, *West Cardinal* and *Isolated Danger* top marks will be removed from service within the Port of Barrow Island, subsea clump weights will remain in place and be removed at a later date.

The below chartlet indicates the identified positions of each mark.

Support vessels Outer Limit and DSV Issabelle will undertake the removal campaign following dive maintenance on the WA Oil Conventional Buoy Mooring (CBM) between April 10-15

Following the removal of the three AtoN Port users are requested to update their charts and navigate with caution while transiting Port waters.



- *South Cardinal* - 20° 47.849' S - 115° 30.723' E
- *West Cardinal* - 20° 47.132' S - 115° 30.014' E
- *Isolated Danger* - 20° 51.628' S - 115° 32.048' E

Port users and operators are reminded to update their records and ensure information is efficiently promulgated.

A complete listing of Port of Barrow Island Marine Notices in force can be viewed and downloaded from the Port of Barrow Island website (allow for Perth business hours to process) at:

<http://www.chevronaustralia.com/our-businesses/barrow-island/barrow-island-port>

Chris Butler/ Brendon Findlater  
 Port Captain – Barrow Island  
 Tel: 08 9184 3667  
 Email: [bwjport@chevron.com](mailto:bwjport@chevron.com)