

wheatstone project community development plan

2021 annual report

about wheatstone

The Chevron-operated Wheatstone Project is one of Australia's largest resource developments and Australia's first LNG 'hub' which shares facilities and enables the development of offshore natural gas resources. The Wheatstone plant site is located 12 kilometres (km) west of Onslow on the Pilbara coast of Western Australia. The project includes two LNG trains with a combined capacity of 8.9 million tonnes per annum and a domestic gas plant. The Project also includes offshore facilities, which gather and partially process gas and associated condensate before delivering it onshore via a 225-kilometre pipeline.

The Wheatstone Project is providing community and economic benefits such as employment, infrastructure investment and local business opportunities. With a predicted project lifespan of more than 30 years, the Wheatstone Project will remain an important pillar of the Australian economy for decades to come.

The Wheatstone Project is a joint venture between Australian subsidiaries of Chevron (64.14 percent), Kuwait Foreign Petroleum Exploration Company (KUFPEC) (13.4 percent), Woodside Energy Group Ltd (13 percent), and Kyushu Electric Power Company (1.46 percent), together with PE Wheatstone Pty Ltd, part-owned by JERA (8 percent).

about wheatstone's community development plan

Chevron Australia and the Western Australian State Government have entered into the Ashburton North State Development Agreement (Wheatstone Project) (the SDA). This agreement requires us to implement a Community Development Plan (CDP) that describes our strategies for achieving lasting community and social benefits within Onslow and the wider Pilbara region, and to provide an Annual Report which details our actions, performance, and delivery of the implementation of the CDP.

The implementation of the CDP focuses on providing four key SDA Community and Social Benefits, which are:

- training and employment for persons living in the Onslow and North-West regions of Western Australia;
- regional development and local procurement of goods and services;
- contributing to community services and facilities; and
- ensuring that a percentage of our operations workforce for the Wheatstone Project is based in the vicinity of Onslow.

This document provides a brief summary of the 2021 Wheatstone CDP annual report.

local training and employment

Chevron is committed to providing employment opportunities during operations for suitably qualified people living in Onslow and the North-West regions of WA.

In 2021, growth of Chevron's Indigenous Sea Ranger program around Onslow included further roles filled and various training and qualifications achieved resulting in capacity building for the rangers.



Through 2021, we continued our partnerships to support education and training in Onslow and across WA.

- In 2021, we supported **Onslow School** with additional teaching resources, including a Learning Support Co-ordinator to focus on 'Students at Educational Risk'.
- Our long term partnership with **Earth Sciences WA** enables them to deliver their program to local schools, including visits to Onslow School and Karratha SHS in 2021

regional development



Providing local business and contracting opportunities.

Chevron is a principal partner of the Onslow Chamber of Commerce and Industry (OCCI). In 2021, our support helped the OCCI:

- Deliver the Onslow Relief Package to offset financial hardships due to COVID-19
- Run events throughout the year for local businesses
- Provide training workshops and specialist support

The expansion of the One Tree Childcare Centre in Onslow was completed in 2021, allowing the centre to increase its capacity. We have also led an industry support package, administered by the OCCI with an aim to allow the expanded childcare facility to attract, retain and train staff.

contributing to the community

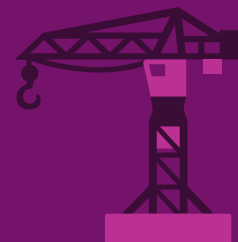
Chevron is committed to being an active contributor and investor in the Onslow community. Together with key stakeholders, we are supporting a range of community development initiatives and investing in local infrastructure.

In 2021, Chevron made a \$1.5 million contribution towards the Onslow community boating precinct. We also made further contributions to local childcare and gymnasium facilities.

The Onslow St John Ambulance sub-centre, which was supported by a \$2 million contribution from Chevron, also opened in 2021.

Following a Social Needs Assessment of the Onslow community in 2021, we have undertaken a collaborative industry response to the findings, which has resulted in a coordinated approach to social investments and closing gaps in community needs. This has included:

- Funding for a dedicated **Youth Program Manager at V Swans** and a **secondary engagement teacher at Onslow School** will re-engage youth.
- A strategic reframe of youth re-engagement to guide the new roles and set them up for success.
- Increased arts offerings and events that **celebrate Aboriginal culture.**
- A digital screen in the town centre to promote important services and events across Onslow.



In 2021, Chevron's partnership with **Telethon Speech and Hearing** was expanded to include speech pathology and occupational therapy, in addition to mobile ear health screening, diagnosis and clinical care pathways.

921 students seen by TSH + chevron's ear health program

440 of those attended audiology clinics

housing staff locally

Chevron is committed to basing a percentage of the Wheatstone Project operations workforce in Onslow.

A number of Wheatstone Project direct operations workers reside in Chevron houses located in Barrarda Estate. We also continue to encourage our contractors and business partners to have a residential based component where possible.

